



DESIGNED TO PROTECT

QUICK-RELEASE COUPLINGS
FLASHBACK ARRESTORS GAS
FILTERS
PRESSURE REDUCTION STATIONS
PNEUMATICS



EDITION II

The Safe Trading Blachowski Sp. z o.o. company's tradition goes back to 1982. Since the very beginning of its operation, the company has been involved in designing, implementation of techniques and manufacturing equipment enhancing safety and comfort of welding operations.

While helping to create the Polish welding industry, the company has brought out numerous proprietary designs and devices enhancing comfort and safety of welding operations. This group of equipment includes safety valves, quick-release couplings with cut-off valves, gas filters, wire guides and many other products. These products comply with applicable standards and have Safety Certificates issued by the Polish welding Centre of Excellence in Gliwice.

Apart from standard equipment, our offer includes a wide range of special equipment tailored to our Clients' specifications and needs.

Our state-of-the-art machinery park guarantees precise manufacturing and enables us to provide machining services. Such factors as our qualified personnel and cutting-edge control methods guarantee high quality and reliability of our products.

In order to complement our assortment, we offer our clients a possibility of purchasing control automation systems and piping systems delivered by one of 12 largest providers operating in these fields on the German market.

Thanks to foreign contacts and cooperation with leading manufacturers of welding equipment, our company also delivers gas regulation systems, expansion stations for cylinder bundles, regulators for cylinders of pressure exceeding 150 bar, gas mixers, medical gas stations as well as a full assortment of elements and parts for gas and pneumatic lines.

Safe Trading Blachowski Sp. z o.o. provides clients with the highest quality of products, which is consistently guaranteed by maintaining the ISO 9001:2000 Quality Management System.



CONTENTS



QUICK-RELEASE COUPLINGS

PAGE 2



FLASHBACK ARRESTORS

PAGE 5



FLASHBACK ARRESTORS WITH COUPLINGS

PAGE 7



FLASHBACK ARRESTORS

NEW

PAGE 9



FITTINGS AND NUTS

PAGE 12



GAS FILTERS

PAGE 13



WIRE GUIDES

PAGE 14



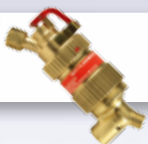
COUPLINGS FOR GASES AND LIQUIDS

PAGE 15



COUPLINGS FOR AIR

PAGE 18



ADDITIONAL OFFER

PAGE 20



QUICK - RELEASE COUPLINGS FOR TECHNICAL GASES

They facilitate quick coupling of torches or other welding devices with a welding regulator or gas source by means of welding hoses.

They are equipped with:

- pollution filters (for inflammable gases) – they separate impurities contained in gases, protect quick-release couplings and working tools, prolong the life cycle of a coupling and enhance the welding process quality;
- check valves - protecting against results of explosive gas mixture accumulation in gas installations (return flow of gases);
- cut-off valves – they prevent uncontrolled gas outflow and facilitate immediate disconnection of hoses as well as changeover of a welding station without the necessity of closing a gas supply;

SZP-F and SZP-O type quick-release couplings are manufactured according to ISO 7289 and have all applicable decisions of the Polish Welding Centre of Excellence in Gliwice no. 3/ZL/A-4/91

Quick-release couplings located by torches

Type	Gas type	Pressure range (bar)	Connections	Catalogue number
SZP-F	Inflammable gas	Acetylene 0,1 - 1,5 Natural gas, Propane 0,1 - 5,0	8 mm – G $\frac{3}{8}$ LH	12.10.01
			6,3 mm – G $\frac{3}{8}$ LH	12.10.24

Type	Gas type	Pressure range (bar)	Connections	Catalogue number
SZP-O	Non-flammable gas	Oxygen, Air 0,1 - 10,0	6,3 mm – G $\frac{1}{4}$ RH	12.20.02
			6,3 mm – G $\frac{3}{8}$ RH	12.20.20

Type	Gas type	Pressure range (bar)	Connections	Catalogue number
SZP-F 2G	Inflammable gas	Acetylene 0,1 - 1,5 Natural gas, Propane 0,1 - 5,0	G $\frac{3}{8}$ LH – G $\frac{3}{8}$ LH	12.10.04

Type	Gas type	Pressure range (bar)	Connections	Catalogue number
SZP-O 2G	Non-flammable gas	Oxygen, Air 0,1 - 10,0	G $\frac{1}{4}$ RH – G $\frac{1}{4}$ RH	12.20.05

Quick-release couplings located within hoses

Type	Gas type	Pressure range (bar)	Connections	Catalogue number
SZW-F	Inflammable gas	Acetylene 0,1 – 1,5 Natural gas, Propane 0,1 – 5,0	8 mm – 8 mm	12.10.26

Type	Gas type	Pressure range (bar)	Connections	Catalogue number
SZW-O	Non-flammable gas	Oxygen, Air 0,1 – 10,0	6,3 mm – 6,3 mm	12.20.25

Quick-release couplings located by welding regulators

Type	Gas type	Pressure range (bar)	Connections	Catalogue number
SZR-F	Inflammable gas	Acetylene 0,1 – 1,5 Natural gas, Propane 0,1 – 5,0	G $\frac{3}{8}$ LH – 8 mm	13.10.01

Type	Gas type	Pressure range (bar)	Connections	Catalogue number
SZR-O	Non-flammable gas	Oxygen, Air 0,1 - 10,0	G $\frac{1}{4}$ RH – 6,3 mm	13.20.02
			G $\frac{3}{8}$ RH – 6,3 mm	13.20.21





QUICK-RELEASE COUPLINGS FOR TECHNICAL GASES

Quick-release couplings type ES-F i ES-O are manufactured according to PN-EN 561 and have the safety certificate no. C-W/011/01/Z issued by the Polish Welding Centre of Excellence in Gliwice.

Quick-release couplings located by torches

Type	Gas type	Pressure range (bar)	Connections	Catalogue number
ESp-F	Inflammable gas	Acetylene 0,1 – 1,5 Natural gas, Propane 0,1 – 5,0	8 mm – G $\frac{3}{8}$ LH	14.10.01

Type	Gas type	Pressure range (bar)	Connections	Catalogue number
ESp-O	Non-flammable gas	Oxygen, Air 0,1 – 10,0	6,3 mm – G $\frac{1}{4}$ RH	14.20.02

Quick-release couplings located by welding regulators

Type	Gas type	Pressure range (bar)	Connections	Catalogue number
ESr-F	Inflammable gas	Acetylene 0,1 – 1,5 Natural gas, Propane 0,1 – 5,0	8 mm – G $\frac{3}{8}$ LH	15.10.01

Type	Gas type	Pressure range (bar)	Connections	Catalogue number
ESr-O	Non-flammable gas	Oxygen, Air 0,1 – 10,0	6,3 mm – G $\frac{1}{4}$ RH	15.20.02

FLASHBACK ARRESTORS

Flashback arrestors EB-F and EB-O type safety valves are fixed on inlets or handles of gas welding torches, in lines of gas supply hoses, at outlets of gas regulators or at gas intake points. (Ordinance of the Minister of Economy, Journal of Laws no. 40, item 470 of 27.04.2000)

They are equipped with:

- pollution filters (for inflammable gases) – they separate impurities contained in gases, protect quick-release couplings and working tools, prolong the life cycle of a coupling and enhance the welding process quality;
- check valves - protecting against results of explosive gas mixture accumulation in gas installations (return flow of gases);
- flame barrier made of sinter (Fe-Cr-Ni) which stops and extinguishes flashback

EB-F and EB-O type safety valves effectively protect gas installations against hazardous results of gas backflow or flashbacks.

EB-F and EB-O type safety valves are manufactured according to PN-EN 730 and have the safety certificate no. C-W/010/01/ZP issued by the Polish Welding Centre of Excellence in Gliwice.

Flashback arrestors located by torches

Type	Gas type	Pressure range (bar)	Capacity m ³ /h	Connections	Catalogue number
EBp-F	Inflammable gas	Acetylene 0,1 – 1,5 Natural gas, Propane 0,1 – 5,0	Acetylene – 5 Natural gas; Propane - 10	8 mm – G ³ / ₈ LH	20.10.01
				6,3 mm – G ³ / ₈ LH	20.10.25
				8 mm – G ¹ / ₄ LH	20.10.26

Type	Gas type	Pressure range (bar)	Capacity m ³ /h	Connections	Catalogue number
EBp-O	Non-flammable gas	Oxygen, Air 0,1 – 10,0	Oxygen, Air - 30	6,3 mm – G ¹ / ₄ RH	20.20.02
				6,3 mm – G ³ / ₈ RH	20.20.20

Type	Gas type	Pressure range (bar)	Capacity m ³ /h	Connections	Catalogue number
EBp-F 2G	Inflammable gas	Acetylene 0,1 – 1,5 Natural gas, Propane 0,1 – 5,0	Acetylene – 5 Natural gas; Propane - 10	G ³ / ₈ LH – G ³ / ₈ LH	21.10.01

Type	Gas type	Pressure range (bar)	Capacity m ³ /h	Connections	Catalogue number
EBp-O 2G	Non-flammable gas	Oxygen, Air 0,1 – 10,0	Oxygen, Air - 30	G ¹ / ₄ RH – G ¹ / ₄ RH	21.20.02
				G ³ / ₈ RH – G ³ / ₈ RH	21.20.03





Flashback arrestors located within hoses

Type	Gas type	Pressure range (bar)	Capacity m3/h	Connections	Catalogue number
EBsw-F	Inflammable gas	Acetylene 0,1 – 1,5 Natural gas, Propane 0,1 – 5,0	Acetylene – 5 Natural gas; Propane - 10	8 mm – 8 mm	23.10.01

Type	Gas type	Pressure range (bar)	Capacity m3/h	Connections	Catalogue number
EBsw-O	Non-flammable gas	Oxygen, Air 0,1 – 10,0	Oxygen, Air - 30	6,3 mm – 6,3 mm	23.20.02

Flashback arrestors located by welding regulators

Type	Gas type	Pressure range (bar)	Capacity m3/h	Connections	Catalogue number
EBr-F	Inflammable gas	Acetylene 0,1 – 1,5 Natural gas, Propane 0,1 – 5,0	Acetylene – 5 Natural gas; Propane - 10	G ³ / ₈ LH – G ³ / ₈ LH	22.10.01
				G ¹ / ₂ RHg.z. – G ³ / ₈ LH	22.10.03

Type	Gas type	Pressure range (bar)	Capacity m3/h	Connections	Catalogue number
EBr-O	Non-flammable gas	Oxygen, Air 0,1 – 10,0	Oxygen, Air - 30	G ¹ / ₄ RH – G ¹ / ₄ RH	22.20.02

Flashback arrestors located in torches

Type	Gas type	Pressure range (bar)	Capacity m3/h	Connections	Catalogue number
EBw-F	Inflammable gas	Acetylene 0,1 – 1,5 Natural gas, Propane 0,1 – 5,0	Acetylene – 5 Natural gas; Propane - 10	G ³ / ₈ LH	27.10.01
				8 mm	27.10.03

Type	Gas type	Pressure range (bar)	Capacity m3/h	Connections	Catalogue number
EBw-O	Non-flammable gas	Oxygen, Air 0,1 – 10,0	Oxygen, Air - 30	G ¹ / ₄ RH	27.20.02
				6,3 mm	27.20.04

FLASHBACK ARRESTORS WITH COUPLINGS



Flashback arrestors with couplings are combinations of welding safety valves and quick-release couplings.

They are fixed at inlets of gas welding torches, in lines of gas supply hoses, at outlets of gas regulators or at gas intake points. (Ordinance of the Minister of Economy, Journal of Laws no. 40, item 470 of 27.04.2000)

They are equipped with:

- pollution filters (for inflammable gases) – they separate impurities contained in gases, protect quick-release couplings and working tools, prolong the life cycle of a coupling and enhance the welding process quality;
- check valves - protecting against results of explosive gas mixture accumulation in gas installations (return flow of gases);
- cut-off valves – they prevent uncontrolled gas outflow and facilitate immediate disconnection of hoses as well as changeover of a welding station without the necessity of closing a gas supply;
- flame barrier made of sinter (Fe-Cr-Ni) which stops and extinguishes flashback

EBS type coupling cut-out systems are manufactured according to ISO 7289 and PN-EN 730.

Flashback arrestors with couplings located by torches

Type	Gas type	Pressure range (bar)	Capacity m3/h	Connections	Catalogue number
EBSp-F	Inflammable gas	Acetylene 0,1 – 1,5 Natural gas, Propane 0,1 – 5,0	Acetylene – 5 Natural gas; Propane - 10	8 mm – G ³ / ₈ LH	24.10.01

Type	Gas type	Pressure range (bar)	Capacity m3/h	Connections	Catalogue number
EBSp-O	Non-flammable gas	Oxygen, Air 0,1 – 10,0	Oxygen, Air - 30	6,3 mm – G ¹ / ₄ RH	24.20.02





Flashback arrestors with couplings located by welding regulators

Type	Gas type	Pressure range (bar)	Capacity m3/h	Connections	Catalogue number
EBSr-F	Inflammable gas	Acetylene 0,1 – 1,5 Natural gas, Propane 0,1 – 5,0	Acetylene – 5 Natural gas; Propane - 10	G $\frac{3}{8}$ LH – 8 mm	25.10.01
				G $\frac{1}{2}$ RHg.z. – 8 mm	25.10.20

Type	Gas type	Pressure range (bar)	Capacity m3/h	Connections	Catalogue number
EBSr-O	Non-flammable gas	Oxygen, Air 0,1 – 10,0	Oxygen, Air - 30	G $\frac{1}{4}$ RH – 6,3 mm	25.20.02
				G $\frac{1}{2}$ RHg.z. – 6,3 mm	25.20.21

FLASHBACK ARRESTORS WITH COUPLINGS

Coupling cut-out systems are manufactured according to PN-EN 561 and PN-EN 730 and have the safety certificate no. C-W/012/01/Z issued by the Polish Welding Centre of Excellence in Gliwice.

Flashback arrestors with couplings located by torches

Type	Gas type	Pressure range (bar)	Capacity m3/h	Connections	Catalogue number
EBSp-F	Inflammable gas	Acetylene 0,1 – 1,5 Natural gas, Propane 0,1 – 5,0	Acetylene – 5 Natural gas; Propane - 10	8 mm – G $\frac{3}{8}$ LH	26.10.01

Type	Gas type	Pressure range (bar)	Capacity m3/h	Connections	Catalogue number
EBSp-O	Non-flammable gas	Oxygen, Air 0,1 – 10,0	Oxygen, Air - 30	6,3 mm – G $\frac{1}{4}$ RH	26.20.02

FLASHBACK ARRESTORS



Scope of application:

- gas safety valves protect against results of gas backflow or flashbacks;
- they are mounted in gas intake points, within process lines, on gas cylinder ramps, i.e. in all applications where high capacity is required.

They are equipped with:

- pollution filters (for inflammable gases) – they separate impurities contained in gases, protect quick-release couplings and working tools, prolong the life cycle of a coupling and enhance the welding process quality;
- check valves - protecting against results of explosive gas mixture accumulation in gas installations (return flow of gases);
- flame barrier made of sinter (Fe-Cr-Ni) which stops and extinguishes flashback
- thermal valves (TV) – ensure protection during long-lasting flashback by effectively blocking of the gas flow.

They are manufactured according to PN EN 730-1 / ISO 5175 TRAC 207 no. 9.22. The type test is approved by the BAM Federal Institute for Materials Research and Testing in Berlin. Safety valves are approved by the DVGW German Technical and Scientific Association for Gas and Water and certified by the NRW National Occupational Safety Institute in Düsseldorf.

Each gas intake point must be equipped with a device protecting against uncontrolled backflow of gas and flashback – D1 BGV § 9 (1) or Trac Nr 204 7,6 (1) and the Ordinance of the Minister of Economy of 27 April 2000 on occupational health and safety at welding operations (Journal of Laws no. 40, item 470).

Flashback arrestors TR V/GRM

Gas type	Maximum operating pressure (bar)	Connections	Catalogue number
Inflammable gas	Acetylene - 1,5 Hydrogen - 3 Other inflammable gases - 6	G 3/8" LH g.z. G 3/8" LH g.w.	45102
		G 1/2" LH g.z. G 1/2" LH g.w.	45103
		G 3/4" LH g.z. G 3/4" LH g.w.	45104

Maximum flow:

- Inflammable gas - 23,6 m³/h
- oxygen - 325 m³/h



Flashback arrestors F V/GRM

Gas type	Maximum operating pressure (bar)	Connections	Catalogue number
Non-flammable gas	Oxygen - 20 Air - 20 Other inert gases - 20	G 1/4" RH g.z. G 1/4" RH g.w.	45101
		G 3/8" RH g.z. G 3/8" RH g.w.	45105
		G 1/2" RH g.z. G 1/2" RH g.w.	45106
		G 3/4" RH g.z. G 3/4" RH g.w.	45107



Maximum flow:

- inflammable gas - 23,6 m³/h
- oxygen - 325 m³/h



Maximum flow:

- inflammable gas - 9 m³/h
- oxygen - 110 m³/h



Maximum flow:

- Inflammable gas - 23,6 m³/h
- oxygen - 325 m³/h



FLASHBACK ARRESTORS

Flashback arrestors TR V/GRM/AS

Gas type	Maximum operating pressure (bar)	Connections	Catalogue number
Inflammable gas	Acetylene - 1,5 Hydrogen - 3 Other inflammable gases - 6	G 3/8" LH – G 3/8" LH	45112
		G 1/2" LH – G 1/2" LH	45113

Flashback arrestors F V/GRM/AS

Gas type	Maximum operating pressure (bar)	Connections	Catalogue number
Non-flammable gas	Oxygen - 16 Air - 16 Other inert gases - 16	G 1/2" RH – G 1/4" RH	45111
		G 3/8" RH – G 3/8" RH	45115
		G 1/2" RH – G 1/2" RH	45116

Flashback arrestors TR VI

Gas type	Maximum operating pressure (bar)	Connections	Catalogue number
Inflammable gas	Acetylene - 1,5 Hydrogen - 3 Other inflammable gases - 6	G 3/8" LH – G 3/8" LH	35082

Flashback arrestors F VI

Gas type	Maximum operating pressure (bar)	Connections	Catalogue number
Non-flammable gas	Oxygen - 16 Air - 16 Other inert gases - 16	G 1/4" RH – G 1/4" RH	46001
		G 3/8" RH – G 3/8" RH	46005

Flashback arrestors TR V

Gas type	Maximum operating pressure (bar)	Connections	Catalogue number
Inflammable gas	Acetylene - 1,5 Hydrogen - 3 Other inflammable gases - 6	G 3/8" LH. – G 3/8" LH	35072
		G 1/2" LH – G 1/2" LH	35073
		G 3/4" LH – G 3/4" LH	35074

Flashback arrestors F V

Gas type	Maximum operating pressure (bar)	Connections	Catalogue number
Non-flammable gas	Oxygen - 16 Air - 16 Other inert gases - 16	G 1/4" RH – G 1/4" RH	45001
		G 3/8" RH – G 3/8" RH	45005
		G 1/2" RH – G 1/2" RH	45006
		G 3/4" RH – G 3/4" RH	45007

FLASHBACK ARRESTORS

Flashback arrestors TRP V

Gas type	Maximum operating pressure (bar)	Connections	Catalogue number
Inflammable gas	Acetylene - 1,5 Hydrogen - 3 Other inflammable gases - 6	G 3/4" LH - G 3/4" LH	35521
		G 1" LH - G 1" LH	35522
		G 1 1/4" LH - G 1 1/4" LH	35523
		G 1 1/2" LH - G 1 1/2" LH	35524

Flashback arrestors FRP V

Gas type	Maximum operating pressure (bar)	Connections	Catalogue number
Non-flammable gas	Oxygen - 16 Air - 16 Other inert gases - 16	G 3/4" RH - G 3/4" RH	45511
		G 1" RH - G 1" RH	45512
		G 1 1/4" RH - G 1 1/4" RH	45513
		G 1 1/2" RH - G 1 1/2" RH	45514

Flashback arrestors TRP V/I

Gas type	Maximum operating pressure (bar)	Connections	Catalogue number
Inflammable gas	Acetylene - 1,5 Hydrogen - 3 Other inflammable gases - 6	G 3/4" LH - G 3/4" LH	35821
		G 1" LH - G 1" LH	35822
		G 1 1/4" LH - G 1 1/4" LH	35823
		G 1 1/2" LH - G 1 1/2" LH	35824

Flashback arrestors FRP V/I

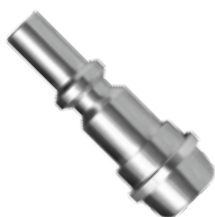
Gas type	Maximum operating pressure (bar)	Connections	Catalogue number
Non-flammable gas	Oxygen - 16 Air - 16 Other inert gases - 16	G 3/4" RH - G 3/4" RH	45811
		G 1" RH - G 1" RH	45812
		G 1 1/4" RH - G 1 1/4" RH	45813
		G 1 1/2" RH - G 1 1/2" RH	45814



Maximum flow:

- Inflammable gas - 105 m³/h
- oxygen - 1400 m³/h





FITTINGS AND NUTS

Outlet connector pipe for SZP i EBSp

Description	Type	Connections	Catalogue number
Outlet connector pipe	A – 15	$\frac{3}{8}$	18.10.05
	T – 15	$\frac{1}{4}$	18.20.06

Nuts

Description	Type	Connections	Catalogue number
Nut	A – 16	G $\frac{1}{4}$ LH	18.10.07
		G $\frac{3}{8}$ LH	18.10.09
		G $\frac{1}{2}$ LH	18.10.08
	T – 16	G $\frac{1}{4}$ RH	18.20.10
		G $\frac{3}{8}$ RH	18.20.19
		G $\frac{1}{2}$ RH	18.20.20

Outlet connector pipe SZP i EBSr

Description	Type	Connections	Catalogue number
Outlet connector pipe	A – 8	8 mm	18.10.11
	T – 6,3	6,3 mm	18.20.12

Connector pipe with nut according to standard 561

Description	Type	Connections	Catalogue number
Outlet connector pipe with nut	ESA – 15/16	G $\frac{3}{8}$ RH	18.10.20
	EST – 15/16	G $\frac{1}{4}$ LH	18.20.21

Connector pipe according to standard 561

Description	Type	Connections	Catalogue number
Outlet connector pipe	ESA – 8	8 mm	18.10.22
	EST – 6,3	6,3 mm	18.20.23

Two-sided connector pipes

Description	Connections	Catalogue number
Two-sided connector pipes	4 mm	18.20.16
	5 mm	18.20.15
	6,3 mm	18.20.14
	8 mm	18.10.13
	13 mm	18.20.17

Connector

Description	Connections	Catalogue number
Connector	4 mm – $\frac{1}{4}$	18.10.24
	6,3 mm – $\frac{1}{4}$	18.10.25
	6,3 mm – $\frac{3}{8}$	18.10.26
	8 mm – $\frac{3}{8}$	18.10.27
	8 mm – $\frac{1}{2}$	18.10.28
	12,5 mm – $\frac{1}{2}$	18.10.29

GAS FILTERS

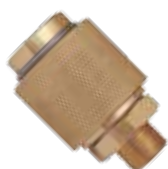
Gas filters (OG-F type) are fixed in gas intake points. They ensure reliable protection against impurities. Their main advantages include:

- precise filtration of mechanical impurities through filter cartridges made of chromium-nickel steel sinters;
- wide scope of application – possibility to use with numerous types of technical gases;
- filter cartridge replacement possible without filter disassembly;
- high flow capacity;
- easy installation;
- extended life cycle of equipment mounted downstream.

Type	Gas type	Pressure range (bar)	Connections	Catalogue number
OG-F	Inflammable gas	Acetylene 0,1 – 1,5 other Inflammable gas 0,1 – 16,0	G $\frac{3}{8}$ RH – G $\frac{3}{8}$ LH	29.10.01
OG-O	Non-flammable gas	Oxygen, Air – 16,0	G $\frac{3}{8}$ RH – G $\frac{3}{8}$ RH	29.20.02

Description	Type	Connections	Catalogue number
Reducing connector	ŁOG-F	G $\frac{3}{8}$ RH g.z – G $\frac{3}{8}$ LH g.w	18.10.17
The mesh filter	FOS-F	–	18.10.19
Filter Fe-Cr-Ni	FOC-F	–	18.10.18





WIRE GUIDES

A new series of wire guides ensuring free and uninterrupted wire feed to welding equipment. They are designed for transport – transfer during MIG/MAG welding by means of bulk packaging.

Main features of wire guides:

- low friction – a container and wire feeder may be connected at a distance of even 12 m;
- protection of welding wire against impurities that may have negative impact on the welding process;
- easy wire replacement – guides and packages are equipped with quick-release couplings.

Wire guides SPAŁ-1

Length	Catalogue number
1,80 m	31.00.01
3,00 m	31.00.02
4,50 m	31.00.03

Wire guides SPAŁ-2

Length	Catalogue number
1,80 m	31.00.10
3,00 m	31.00.20
4,50 m	31.00.30

Welding wire guide equipment

Description	Catalogue number
Barrel connector hood	31.00.40
Quick-release couplings – connector feeder	31.00.50

COUPLINGS FOR GASES AND LIQUIDS

Couplings with cut-off valve are used for fast connection of cooling systems in semi-automatic welding machines and also in a great number of pneumatic devices. SPA series couplings are equipped with cut-off valve which prevents uncontrolled flow of medium. It allows immediate disconnection of hoses and rearming of welding station without necessary medium flow closing.

Couplings with male thread NW 5,0

Type	Connections	Catalogue number	Pressure range (bar)
SPA1-1-1/8	1/8	301.73.50.10	0-35
SPA1-1-1/4	1/4	301.73.50.13	
SPA1-1-3/8	3/8	301.73.50.17	

Couplings with female thread NW 5,0

Type	Connections	Catalogue number	Pressure range (bar)
SPA1-2-1/8	1/8	301.72.50.10	0-35
SPA1-2-1/4	1/4	301.72.50.13	
SPA1-2-3/8	3/8	301.72.50.17	

Couplings hose barb fittings NW 5,0

Type	Connections	Catalogue number	Pressure range (bar)
SPA3-2-04	4 mm	301.74.50.04	0-35
SPA3-2-06	6 mm	301.74.50.06	
SPA3-4-08	8 mm	301.74.50.08	
SPA3-4-09	9 mm	301.74.50.09	
SPA3-4-10	10 mm	301.74.50.10	





Couplings threaded diaphragm fittings and hose barb fittings NW 5,0

Type	Connections	Catalogue number	Pressure range (bar)
SPA1-1/P05	5 mm	301.76.50.05	0-35
SPA1-1/P06	6 mm	301.76.50.06	
SPA1-1/P08	8 mm	301.76.50.08	
SPA1-1/P10	10 mm	301.76.50.10	

Fittings for SPA couplings

Hose connector pipe NW 5,0

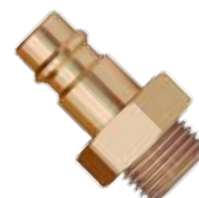
Type	Connections	Catalogue number
SPA1-1-04	4 mm	301.85.50.04
SPA1-1-05	5 mm	301.85.50.05
SPA1-1-06	6 mm	301.85.50.06
SPA1-1-08	8 mm	301.85.50.08
SPA1-1-09	9 mm	301.85.50.09
SPA1-1-10	10 mm	301.85.50.10

Threaded connectors and hose barb connectors NW 5.0

Type	Connections	Catalogue number
SPA1-1/12/13/06	6 mm	18.20.01
SPA1-1/12/13/09	9 mm	18.20.02

Connector with male thread NW 5.0

Type	Connections	Catalogue number
SPA1-1 KZ- $\frac{1}{8}$	$\frac{1}{8}$	301.86.50.10
SPA1-1 KZ- $\frac{1}{4}$	$\frac{1}{4}$	301.86.50.13
SPA1-1 KZ- $\frac{3}{8}$	$\frac{3}{8}$	301.86.50.17



Connector with female thread NW 5.0

Type	Connections	Catalogue number
SPA1-1 KW- $\frac{1}{8}$	$\frac{1}{8}$	301.87.50.10
SPA1-1 KW- $\frac{1}{4}$	$\frac{1}{4}$	301.87.50.13
SPA1-1 KW- $\frac{3}{8}$	$\frac{3}{8}$	301.87.50.17



Connector threaded diaphragm fittings and hose barb fittings NW 5.0

Type	Connections	Catalogue number
SPA1-1 L/P-06	6 mm	301.90.06.50
SPA1-1 L/P-08	8 mm	301.90.08.50
SPA1-1 L/P-09	9 mm	301.90.09.50
SPA1-1 L/P-10	10 mm	301.90.10.50





COUPLINGS FOR AIR

One-sided cutting-off pneumatic couplings for air, Euro type, NW7.2 diameter are important auxiliary equipment in industry. They enable connecting and disconnecting of hoses with compressed air in a few seconds.

Connector with male thread NW 7,2

Type	Connections	Catalogue number	Operating pressure (bar)
R 26 GZ- 1/8	1/8	301.73.00.10	0-35
R 26 GZ- 1/4	1/4	301.73.00.13	
R 26 GZ- 3/8	3/8	301.73.00.17	
R 26 GZ- 1/2	1/2	301.73.00.21	

Connector with female thread NW 7,2

Type	Connections	Catalogue number	Operating pressure (bar)
R 26 GW- 1/4	1/4	301.72.00.13	0-35
R 26 GW- 3/8	3/8	301.72.00.17	
R 26 GW- 1/2	1/2	301.72.00.21	

Connector hose barb fittings NW 7,2

Type	Connections	Catalogue number	Operating pressure (bar)
R 26 - 06	6 mm	301.74.06.00	0-35
R 26 - 08	8 mm	301.74.08.00	
R 26 - 09	9 mm	301.74.09.00	
R 26 - 10	10 mm	301.74.10.00	
R 26 - 13	13 mm	301.74.13.00	

Accessories for connectors NW 7,2

Hose connector pipe NW 7,2

Type	Connections	Catalogue number
R 26 K-04	4 mm	301.85.04.00
R 26 K-06	6 mm	301.85.06.00
R 26 K-08	8 mm	301.85.08.00
R 26 K-09	9 mm	301.85.09.00
R 26 K-10	10 mm	301.85.10.00
R 26 K-12	12 mm	301.85.12.00
R 26 K-13	13 mm	301.85.13.00

Connector with male thread NW 7,2

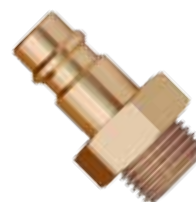
Type	Connections	Catalogue number
R 26 KZ- $\frac{1}{8}$	$\frac{1}{8}$	301.86.00.10
R 26 KZ- $\frac{1}{4}$	$\frac{1}{4}$	301.86.00.13
R 26 KZ- $\frac{3}{8}$	$\frac{3}{8}$	301.86.00.17
R 26 KZ- $\frac{1}{2}$	$\frac{1}{2}$	301.86.00.21

Connector with female thread NW 7,2

Type	Connections	Catalogue number
R 26 KW- $\frac{1}{8}$	$\frac{1}{8}$	301.87.00.10
R 26 KW- $\frac{1}{4}$	$\frac{1}{4}$	301.87.00.13
R 26 KW- $\frac{3}{8}$	$\frac{3}{8}$	301.87.00.17
R 26 KW- $\frac{1}{2}$	$\frac{1}{2}$	301.87.00.21

Connector threaded diaphragm fittings and hose barb fittings NW 7,2

Type	Connections	Catalogue number
R 26 KP-06	6 mm	301.90.06.00
R 26 KP-08	8 mm	301.90.08.00
R 26 KP-09	9 mm	301.90.09.00
R 26 KP-10	10 mm	301.90.10.00





ADDITIONAL OFFER

FLASHBACK ARRESTORS WITT

Scope of application:

- gas safety valves protect against results of gas backflow or flashbacks;
- they are mounted in gas intake points, within process lines, on gas cylinder ramps, i.e. in all applications where high capacity is required.

They are equipped with:

- pollution filters (for inflammable gases) – they separate impurities contained in gases, protect quick-release couplings and working tools, prolong the life cycle of a coupling and enhance the welding process quality;
- check valves - protecting against results of explosive gas mixture accumulation in gas installations (return flow of gases);
- flame barrier made of sinter (Fe-Cr-Ni) which stops and extinguishes flashback
- thermal valves (TV) – ensure protection during long-lasting flashback by effectively blocking of the gas flow.

Flashback arrestors RF 53N

Gas type	Maximum operating pressure (bar)	Connections	Catalogue number
Inflammable gas	Acetylene – 1,5 Natural gas; Propane Methane, Hydrogen – 5,0	G 1/4 LH – G 1/4 LH	145.009
		G 3/8 LH – G 3/8 LH	145.012
		G 1/2 LH – G 1/2 LH	145.016
Non-flammable gas	Oxygen, Air – 20,0	G 1/4 RH – G 1/4 RH	145.021
		G 3/8 RH – G 3/8 RH	145.022
		G 1/2 RH – G 1/2 RH	145.023

Flashback arrestors 85–10

Gas type	Maximum operating pressure (bar)	Connections	Catalogue number
Inflammable gas	Acetylene – 1,5 Natural gas; Propane Methane, Hydrogen – 5,0	G 3/8 LH – G 3/8 LH	143.002
		G 1/2 LH – G 1/2 LH	143.008
Non-flammable gas	Oxygen, Air – 30,0	G 1/4 RH – G 1/4 RH	143.013
		G 3/8 RH – G 3/8 RH	143.016
		G 1/2 RH – G 1/2 RH	143.019

Flashback arrestors 85–30

Gas type	Maximum operating pressure (bar)	Connections	Catalogue number
Inflammable gas	Acetylene – 1,5 Natural gas; Propane Methane 5,0 Hydrogen – 4,0	G 3/4 LH – G 3/4 LH	147.001
		G 1 LH – G 1 LH	147.003
		G 1 1/2 LH – G 1 1/2 LH	147.004
Non-flammable gas	Oxygen, Air – 20,0	G 3/4 RH – G 3/4 RH	147.005
		G 1 RH – G 1 RH	147.006
		G 1 1/2 RH – G 1 1/2 RH	147.008

GAS FILTERS

Gas filters 77/pn40 and 625 are fixed in gas intake points. They ensure reliable protection against impurities. Their main advantages include:

- precise filtration of mechanical impurities through filter cartridges made of chromium-nickel steel sinters;
- wide scope of application – possibility to use with numerous types of technical gases;
- filter cartridge replacement possible without filter disassembly;
- high flow capacity;
- easy installation;
- extended life cycle of equipment mounted downstream.

Gas filter 77/PN40

Maximum operating pressure (bar)	Connections	Degree of filtration	Catalogue number
Acetylene – 1,5 Other inflammable gas – 16,0 Oxygen; Air – 40,0	G 3/4 – G 3/4	30µm	077.001
	Collet DN25/PN40		077A.006
Cartridges made of chromium-nickel steel sinters			FI-007

Gas filter 625

Maximum operating pressure (bar)	Connections	Degree of filtration	Catalogue number
Acetylene – 1,5 Other inflammable gas – 16,0 Oxygen 10,0 Air – 16,0	G 1 1/4 – G 1 1/4	40µm	042.001
	Collet DN50/PN40		042.003
Cartridges made of chromium-nickel steel sinters			FI-625





FLASHBACK ARRESTORS IBEDA

Scope of application:

- gas safety valves protect against results of gas backflow or flashbacks;
- they are mounted in gas intake points, within process lines, on gas cylinder ramps, i.e. in all applications where high capacity is required.

They are equipped with:

- pollution filters (for inflammable gases) – they separate impurities contained in gases, protect quick-release couplings and working tools, prolong the life cycle of a coupling and enhance the welding process quality;
- check valves - protecting against results of explosive gas mixture accumulation in gas installations (return flow of gases);
- flame barrier made of sinter (Fe-Cr-Ni) which stops and extinguishes flashback
- thermal valves (TV) – ensure protection during long-lasting flashback by effectively blocking of the gas flow.

Flashback arrestors DGN

Gas type	Maximum operating pressure (bar)	Connections	Catalogue number
Inflammable gas	Acetylene – 1,5 Hydrogen – 3,5 Natural gas; Propane – 5,0	G 3/8 LH – G 3/8 LH	0701-4122
Non-flammable gas	Oxygen, Air – 15,0	G 1/4 RH – G 1/4 RH	0701-4126
		G 3/8 RH – G 3/8 RH	0701-4127

Flashback arrestors DG 91N

Gas type	Maximum operating pressure (bar)	Connections	Catalogue number
Inflammable gas	Acetylene – 1,5 Hydrogen – 4,0 Natural gas; Propane – 5,0	G 3/8 LH – G 3/8 LH	0701-1121
		G 1/2 LH – G 1/2 LH	0701.1122
Non-flammable gas	Oxygen, Air – 15,0	G 1/4 RH – G 1/4 RH	0701-1126
		G 3/8 RH – G 3/8 RH	0701-1127
		G 1/2 RH – G 1/2 RH	0701-1128

SIMAX - 3

Gas type	Maximum operating pressure (bar)	Connections	Catalogue number
Inflammable gas	Acetylene – 1,5 Hydrogen – 4,0 Natural gas; Propane – 5,0	G 1 RH – G 1 RH	0701-3173
Non-flammable gas	Tlen, powietrze – 15,0	G 1 RH – G 1 RH	0701-3195

Machining

The Safe Trading Blachowski Sp. z o.o. company's Machining Department benefits from several decades of the company's tradition. Initially, all machining operations satisfied company's internal needs, however, with time, our developing machinery park has offered free capacity enabling us to develop our range of machining services.



Machining services are provided using numerically controlled machine tools, CNC lathes as well as conventional stations and universal lathes.

We employ qualified personnel with a broad range of expertise and long-standing experience in the industry. Our services are provided according to orders placed, technical documentation provided, using the recommended technology and detail designs. Such factors as our personnel's involvement and constantly modernised machinery park ensure our clients' satisfaction with the quality of our products.



We provide all types of services connected with machining using numerically controlled machine tools, CNC lathes as well as conventional stations and universal lathes within the following scope:

- conventional turning – max. diameter 350 mm, length 1200 mm;
- turning on conventional automatic lathes – max. diameter 25 mm, length 160 mm; max. diameter 42 mm, length 100 mm;
- turning on single-spindle automatic lathes – max. diameter 42 mm, length 120 mm;
- turning and milling on lathe machining centres with counter spindles – max. diameter 42 mm, length 100 mm.

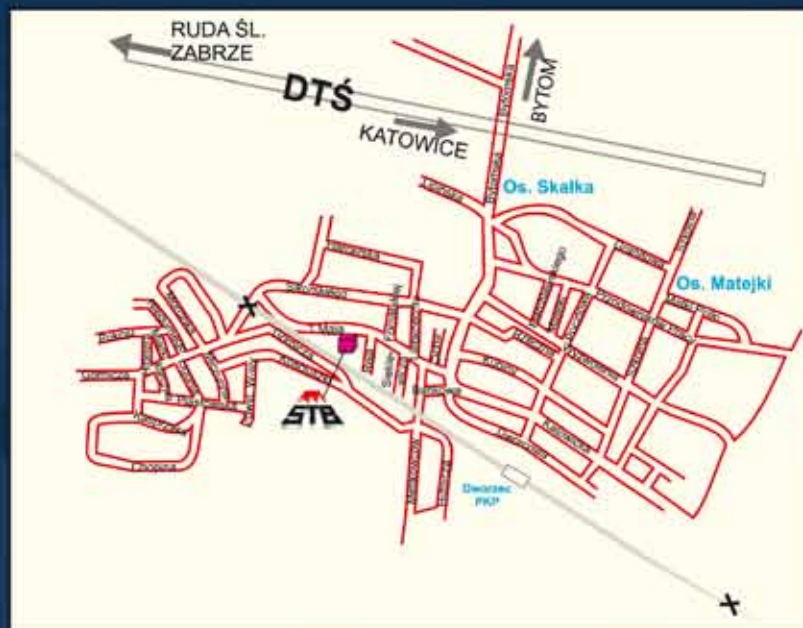


Our machinery park facilitates production of precise, repeatable and high-quality details within small and average-sized batches. Our qualified specialists with a wide range of expertise and long-standing experience guarantee provision of high-level services.



We are looking forward to cooperation with our clients.





Safe Trading Blachowski Sp. z o.o.
41-600 Świętochłowice
ul. 1 Maja 17
tel.: 32 770 01 29
32 770 01 35
fax: 32 245 46 66
e-mail: stb@safetrading.pl
www.safetrading.pl

